

ANNUAL REPORT

2015 - 2016



The Royal College of Pathologists of Australasia

1956 - CELEBRATING 60 YEARS - 2016



Contents

President's Perspective	2
Reports	4
Review of Operations	6
RCPA Events	8
Special Event: 60th Anniversary	14
RCPA Foundation	16
Fellowships Awarded	17
Awards Presented 2016	20
Information on Directors	21
Vale	25
Obituaries	26
Meetings of the Board of Directors	31
Indemnifying Officers or Auditor	32
Proceedings on Behalf of College	33
Directors' Declaration	34
Auditors Independence Declaration	35
Statement of Profit or Loss and other comprehensive Income	36
Statement of Financial Position	37
Statement of Cash Flows	38
Statement of Changes in Equity	39
Notes to the Financial Statements	40
Independent Auditor's Report	58

PRESIDENT'S PERSPECTIVE



The year 2016 was a milestone year for the College, being our 60th anniversary, celebrated in wonderful style in Melbourne at this year's Pathology Update. The Events Department "pulled out all the stops" for the conference dinner where we were entranced by stories from a kaleidoscope of Fellows from each decade (which will be highlighted with a pictorial spread in this report). It was a proud event for us all and highlighted the impact that the College and College Fellows have had on health care around the world. During an exhibition under the title "A College and its stories" memorabilia and an interactive history of the College kept many Fellows engaged and entertained for hours. The interactive history is now available on the College website.

The forecasted changes to the RCPAQAP relationship have been successfully completed with the RCPAQAP company more formally coming under the umbrella of the College. This has created subsequent benefits for Fellows better utilising synergies between the two organisations and reinforcing the critical importance of the QAP for Fellows.

Our newest Faculty, the Faculty of Clinical Forensic Medicine, has powered ahead with the founding Fellows inducted into the Faculty at the Fellowship ceremony at Pathology Update

this year. The Faculty Committee has already developed a curriculum, training and assessment process for the entry of new FCFMs.

Our "second newest" faculty, the Faculty of Science, has this year received its first five Fellows by the new examination pathway and these Fellows have received their certificates – congratulations to those new Fellows and all those involved in this endeavour.

The Australian political landscape over the year has been disruptive – for Pathology as well as generally! The College has maintained a vigorous advocacy role and many College Fellows, including your Board of Directors and Committee members, have been actively involved in interaction with governments (both Federal and State). We are determined to protect the interests of Fellows and patients in the "blood soaked battlefields of health policy". Your representatives have been interacting with Health Ministers, Health Department bureaucrats and the media. The major issues include unexpected and unwarranted fee cuts, the MBS Review, Collection Centre rental issues, Cervical Cancer screening renewal and also the Lyme disease Senate enquiry.

A major interaction has been with the Medical Boards of Australia and New Zealand. Your College has developed and now introduced the "enhanced CPDP" programs required by the Medical Boards to ensure ongoing competence. We believe we have "set the scene" here and have a model for other Colleges to follow and have satisfied the proposed Medical Boards revalidation requirements. The issue of dual Fellows without recency of practice in laboratory medicine is being worked through and there will be, I believe, a good outcome for all.

The major role of the College is to recruit, train, assess and certify new Fellows. Workforce vacancy surveys are regularly conducted and continue to show a shortage of pathologists and

President's Perspective

senior scientists throughout Australia and New Zealand. We continue to lobby for more training positions as well as the appointment of pathologists and senior scientists to leadership positions in pathology services. A large proportion of Fellows are involved in training and supervision of trainees as well as running the examination systems and we all owe them our gratitude for this. The year was the second successful year for digitisation of the Anatomical Pathology exam. We are being assessed by the Australian Medical Council for Accreditation in November 2016 with much preparation and already significant interaction.

Educational activities are an important way that the College supports Fellows and again this year we have run an excellent Pathology Update and many successful courses.

International reach of the College includes regular visits to Singapore, Malaysia and Hong Kong as well as an annual meeting of the International Liaison of Pathology Presidents (ILPP) which includes Colleges from UK, Ireland, Canada, USA, Hong Kong, Malaysia, Singapore, South Africa and of course the RCPA. Your College hosted this meeting immediately following Pathology Update 2016. Many issues of mutual interest were discussed and joint determinations made. The formation of a company to develop and promulgate Structured Reporting in Cancer has been an important collaborative activity.

Interaction with other Australasian Colleges occurs through the Committee of Presidents of Medical Colleges which meets regularly and develops policy. This has been an important mechanism for interacting with the Medical Boards of Australia and New Zealand.

Finally I would like to thank you College Fellows for your support for College activities, whether it's volunteering to participate in a myriad of representative roles and tasks or taking part in

College organised events. I am also most grateful for the endeavours and commitment of the CEO and all those College employees who support our organisation.

I commend the 2016 annual report of the RCPA to you.

Dr Michael Harrison
President





REPORTS

Board of Directors

Alphabetical list of Directors of the College in office from 1 July 2015 to 30 June 2016.

Dr Lawrence **Bott**

A/Prof Merrole **Cole-Sinclair**

Dr Michael **Dray**

Dr Michael **Harrison**

Dr Jan **Kencian**

Prof Anthony **Landgren**

Dr Bruce **Latham**

Dr Sophia **Otto**

Prof Roger **Wilson**

State of Affairs

No significant changes in the state of affairs of the College occurred during the financial year.

Short and Long Term Objectives

The College aims to be a self supporting organisation promoting the study of science and the practice of pathology to ensure that sufficient expert pathology services are available to sustain the practice of medicine and to promote health care in the Australasian region.

Principal Activities

The principal activities of the College during the course of the financial year were the promotion of the study of the sciences and practice of pathology in relation to medicine and the consideration of all questions affecting the interests of College Fellows, as well as the encouragement of research in pathology and ancillary sciences. No significant change in the nature of these activities occurred during the year.

Future Developments

In late 2016 the College will be assessed by the Australian Medical Council (AMC) for re-accreditation. The assessment is a major undertaking in terms of making Fellows and Trainees available to the AMC team and preparing all the documentation that is required.

Operating Results

Details of the operating result for the College as at 30 June 2016:

General funds	\$108,349
RCPA Foundation	(\$26,984)
Education or Research Funds	\$221,660
	\$303,025

Dividends

The College is a 'Not for Profit' organisation and as such does not pay dividends.

Performance Measurement

The College monitors membership and trainee numbers against workforce projections needed to support ongoing demand for pathology services. The College liaises with governments and seeks to implement appropriate strategies to ensure that the workforce of pathologists and scientists is sufficient to meet the projected demand for services. Informal benchmarking of the subscriptions paid by members against subscriptions levied by other specialist medical colleges of a similar size is undertaken. This process has revealed that the College fees continue to be at the lower end of the spectrum.

Reports

Environmental Issues

The operations of the College are not subject to significant environmental regulation under the law of the Commonwealth or State.

Member Contribution

Fellows of the College, Honorary Fellows of the College and Fellows of College Faculties would contribute up to \$20 each in the event of winding up.

Incorporation

The College is incorporated and domiciled in NSW, Australia.





REVIEW OF OPERATIONS

Board of Directors Meetings

The Board of Directors conducted a total of 12 meetings during the year via teleconference and face to face dealing with the many issues presented for decision as well as regular agenda items such as approval of new and updated documents for the College Policy Manual, and approval of candidates for Fellowship and other categories of membership. The Board receives monthly reports from each Board member including financial statements and a report from the CEO.

Major areas of concern for the Board over the past year have been the Collection Centre rents issues, the Government's Bulk Billing incentives December 2015 announcement, the development of Internal Quality Assurance (IQA) Frameworks for all disciplines and implementation of IQA in regards to Continuing Professional Development (CPD). Concerns have continued in relation to future government funding in Australia and the government processes for dealing with the pathology sector during and arising from the Medical Benefits Schedule (MBS) Review, all of which were hampered by the impending Federal election. The Board has also been involved, as have the other Colleges in discussions on revalidation and the format it may take in Australia and New Zealand.

Board of Education and Assessment (BEA)

Curriculum development has moved ahead in leaps and bounds over the year in particular for the Faculties. An enormous body of work took place to prepare the detailed College submission required by the AMC in advance of the November 2016 AMC Accreditation assessment of the College.

Board of Professional Practice and Quality (BPPQ)

The BPPQ has continued to grapple with Approved Collection Centre arrangements, Federal Health Budgets and the MBS Review. BPPQ continues to work with the Board on other matters such as pathology workforce issues and revalidation. The Committee has an on-going schedule of policy revision and frequently makes recommendations for Position Statements and advice to external stakeholders. Several new documents have been developed over the past year.

Discipline Advisory Committees (ACs)

The Board directive for each advisory committee to undertake a Strategic Planning Day every two years is proving very beneficial in helping each discipline define its directions. Many of the ACs were also involved in the development of the IQA Frameworks, providing feedback and advice. The volume of documentation for comment received by the College continues to grow and the ACs provide their expertise in assisting with this. It should be acknowledged that this often requires reviewing sizeable documents and providing feedback. Where required the Advisory Committees also help in developing new policy manual documents on specific issues.

Committees

There are a number of committees that work on specific areas, eg Informatics, Cancer Services and Lay. Significant progress has been made over the year in all these committees with regular meetings being held.

Review of Operations

State and Regional Committees

State and Regional Chairs and Committees have a major role in the organisation and running of examinations in their areas which is of immense value to the College. All State and Regional Chairs are members of the Council Committee which meets annually to consider and direct future strategic planning for the College. Under the guidance of each State/Regional Councillor Annual General Meetings are held. State and Regional Chairs are a valuable resource for Fellows and Trainees alike, opening up lines of communication on local and general issues.

Faculty of Clinical Forensic Medicine:

A further group of Founding Fellows was approved this year. The Faculty Committee is now established and working towards a suitable program for future Trainees.

Faculties

Faculty of Oral and Maxillofacial Pathology:

The College continues to engage with the Dental Boards of Australia and New Zealand in discussions with regard to specialist status for oral and maxillofacial pathology. The Faculty, although small, has been boosted by the inclusion of Forensic Odontologists who are represented on the Faculty committee.

Faculty of Science:

The first 5 Fellows by examination received their certificates at the 2016 College awards ceremony together with several who achieved Faculty Fellowship by the Research pathway.



RCPA EVENTS

RCPA Events 1 July 2015 to 30 June 2016

HAEMATOLOGY DIAGNOSTICS WORKSHOP **5 September 2015, Surry Hills, New South Wales**

A survey was completed reflecting a clear need to address the continuing education requirements of haematologists, particularly with regard to recent advances in knowledge, techniques, interpretation and clinical application. As a result of the survey the first workshop was held on Saturday 5 September. Ms Anne Gilbert, a Senior Hospital Scientist at ICPMR Westmead, presented an update on haemoglobinopathies. A/Prof William Stevenson, Supervising Pathologist of the PaLMS Molecular Haematology and Cytogenetics laboratory in Sydney, and Dr Elizabeth Tegg from ICPMR at Westmead presented an update on molecular haematology, including potential for next generation sequencing technologies in the laboratory; and cytogenetics and FISH +/- arrays.

NEW ZEALAND ANNUAL SCIENTIFIC MEETING – QUINTESSENTIALLY QUEENSTOWN **18 - 20 September 2015, Queenstown, New Zealand**

Quintessentially Queenstown included the New Zealand Society of Pathologists, Anatomical Pathologists, Forensic pathologists and Fellows of the Faculty of Clinical Forensic Medicine. It was a successful meeting with 220 delegates gathering at the Millennium Hotel, Queenstown. Dr Peter Fitzgerald organised the Anatomical Pathology program, A/Prof Neil Langlois the Forensic Interim program and Dr Bob Hoskins the Faculty of Clinical Forensic Medicine program. Awards were presented to Dr Nicole Kramer for the IGENZ Best Fellow Proffered Paper titled "Polyps, pilots and proformas: an audit of 1001 bowel screening pilot specimens at LabPlus", Dr Peter Ferguson for IGENZ Best Trainee Proffered Paper titled "Metastatic melanoma in NZ – the molecular picture", and Dr Wendy McBurnie for IGENZ Best Scientific Poster Display titled "Liquid based cytology in thyroid FNA's...controversial?"



The prestigious Distinguished Service Medal of the NZ Society of Pathologists was presented to Dr Jonathan Zwi (*left*) by Dr Ian Beer NZSP President (*right*).

RCPA Events

ANATOMICAL PATHOLOGY AND LABORATORY SKILLS WORKSHOP (APLS4) **22 - 25 October 2015, Ballarat, Victoria**



An annual workshop held in Ballarat for anatomical pathology trainees was once again extremely popular and reached delegate capacity very early. Important examination material was covered and the practical sessions were well received. Delegates came from nearly every state of Australia and a number attended from New Zealand. The event ran with the help of sponsors: St John of God Pathology, Howden Medical Books, Abacus ALS, Roche, Healthscope Pathology and Hurst. Pathologists and Scientists from 8 different Victorian laboratories participated ensuring a very successful and educational course.

TRENDS IN SURGICAL PATHOLOGY **28 October 2015, Concord, New South Wales**

The annual NSW Trends in Surgical Pathology lecture was held on Wednesday 28 October 2015. This complimentary meeting was held at the Medical Education Centre at the Concord Hospital, Concord and this year Dr Amanda Charlton from Westmead Children's Hospital was the special presenter speaking on "Photography for Pathologists".

RCPA Events

SHORT COURSE IN FORENSIC PATHOLOGY **30 October – 1 November 2015, Hobart, Tasmania**



and blood spatter interpretation. This course was suitable for pathologists undertaking or contemplating some forensic practice, trainees in anatomical and forensic pathology and other medical practitioners.

This unique course covered most standard topics in forensic pathology, with a very practical approach and emphasis on casework interpretation. Presentations included: the pathologist in the Coronial system, estimation of time of death, forensic interpretation of injuries, ballistics and gunshot wounds, asphyxia, legal problems encountered by forensic pathologists, ageing of injuries, examination of bodies recovered from water or fire, detection of hidden homicide, sudden cardiac death and the particular problems of high public profile deaths. Also included were three workshops – autopsy procedure, injuries

INTERNATIONAL PAEDIATRIC PATHOLOGY SOCIETY MEETING **19 - 21 November 2015, Perth, Western Australia**



hot topics in paediatric pathology, symposiums on melanoma, perinatal neuromuscular disease and stillbirths. The slide seminar covered sentinel signs of syndromes and markers of underlying genetic disorders. The meeting was kindly supported by RCPA Quality Assurance Program, Path West, Tourism WA, Perth Convention Bureau and Government of Western Australia.

The Paediatric Pathology Association (PPS) in conjunction with the Australian and New Zealand Paediatric Pathology Group (ANZPPG) held a very successful ASM in Perth, the first PPS meeting in Australasia. Speakers included Australasian experts as well as leading international speakers in paediatric and perinatal pathology. The meeting attracted delegates from over 50 locations in UK, Europe, Middle East, Russia, Africa, Asia, Canada and America. Highlights included an update on

RCPA Events

SHORT COURSE IN ADULT AND FETAL GROSS PATHOLOGY **27 – 29 November 2015, Hobart, Tasmania**

The course aimed to show trainees the importance of the hospital autopsy, the reasons for its decline and expose them to the extensive range of gross pathology that is no longer commonly seen. Speakers included Drs John McArdle, Susan Arbuckle and David Challis. The meeting attracted 40 delegates from Australia and New Zealand. The content was excellent with a vast collection of gross photos, each collected personally by the speakers over decades of practice, presented in an informative and concise manner. Highlights included a comprehensive guide to the fetal autopsy, the importance of placenta and appropriate examination, a condensed history of the autopsy, the contemporary autopsy and gross pictures of diseases registrars do not get to see at the cut up bench. The meeting was kindly supported by Federal Government funding through the “Training more Specialist Doctors in Tasmania” initiative and the College.

REVIEW AND RECENT ADVANCES IN PATHOLOGY AND THE TOO HARDS SLIDE SEMINAR **February – October, Camperdown, New South Wales**

The Too Hard Slide Show ran as two sessions at the Royal Prince Alfred Hospital, Camperdown in 2016 as part of an ongoing commitment to Trainee education. Session A ran from 17 February to 11 May 2016 and session B was due from 20 July to 19 October 2016. These included several workshops and a Trial Practical Exam for Part 1 and Part 2 examination candidates. Small biopsy and cytology topics were catered for by several workshops during the first semester of the Too Hards. Registrars were also encouraged to bring small biopsy and cytology cases to the general Too Hard sessions. The sessions were open to everyone and attendance by non-cytology/non-small biopsy exam candidates was encouraged.

INTRODUCTION TO THE MORTUARY AND THE AUTOPSY WORKSHOP **25 February 2016, Melbourne, Victoria**

Presented as a Pathology Update 2016 pre-conference workshop this event was held at the Victorian Institute of Forensic Medicine (VIFM) on 25 February 2016. A one day course suitable for new anatomical, general and forensic pathology trainees the emphasis was on basic principles of the post-mortem examination in the hospital (non-Coronial) environment, and lectures included the perinatal autopsy. The day also incorporated direct observation of an autopsy with teaching by the course organisers. The course included principles to use in approaching viva examinations of post-mortem macroscopic specimens (‘museum pots’) and provided an opportunity to practise in small groups.

RCPA Events

PATHOLOGY UPDATE 2016: A DIAMOND DATE **26-28 February 2016, Melbourne, Victoria**



Coined "A Diamond Date" in honour of the 60th year of the College, Pathology Update 2016 was another highly successful scientific meeting and also marked the sixth Pathology Update staged in Melbourne.

The event attracted a total of 1233 registrations with 147 Speakers (local and international) and 38 Sponsors and Exhibitors. Pathology Update is the only Australasian multi-disciplinary scientific meeting covering all disciplines of pathology across eight concurrent scientific sessions. In addition it included a program for the new Faculty of Clinical Forensic Medicine.

The Melbourne Convention Centre was buzzing with atmosphere right from the start on Friday morning and that buzz was maintained throughout the three day scientific program. The Pathology Update 2016 Overseeing Committee would like to especially thank the Chairs of each of the Scientific Program Committees and their members who work so hard to put together the scientific program. Thank you to A/Prof Chris Hemmings (Anatomical Pathology), Dr Que Lam (Chemical Pathology), A/Prof Neil Langlois (Forensic Pathology), Dr Robert Hoskins (Faculty of Clinical Forensic Medicine), Prof Richard Logan (Faculty of Oral and Maxillofacial Pathology), Dr Melody Caramins (Genetic Pathology), Dr Bronwyn Williams (Haematology), Dr Katrina Randall (Immunopathology) and Dr Harsha Sheorey (Microbiology).

IMMUNOPATHOLOGY TRAINING COURSE **27 – 29 April 2016, Surry Hills, New South Wales**



The course continues to be highly valued and popular amongst immunopathology Trainees, and this year's course was one of the best to date. With a faculty chosen from all over Australia as being leaders in the field, presentations were of exceptional quality and the 33 delegates (including some established pathologists) greatly appreciated the learning opportunities provided. The Alan Ng Education Centre was ideal to facilitate interactions between faculty, delegates and examiners alike, and was buzzing with

discussions on the science and practice of immunopathology.

RCPA Events

VIRUSES IN MAY

5 – 7 May 2016, Katoomba, New South Wales



After an opening address by Tracey McCosker, Chief Executive of NSW Health Pathology, discussion took place on basic virology, and many of the emerging issues around using novel technology such as Next Generation Sequencing to understand the basics of virus pathogenesis. Hepatitis, still a major health challenge, causing mortality and chronic illness, was addressed. The continuing need for vigilance in facing emerging virus threats was evident in talks on vaccination, new diagnostics, biological threats to Australia and discussions of lesser known viruses such as HTLV1. Threats

to human health like the recent Zika virus emergence were highlighted as was a background of continuing arbovirus infections.

During the year the College was also involved in a number of Medical Careers days all of which were manned by Fellows and Trainees of the College who gave up their personal time to inform and enthuse the large numbers of interested attendees:

AMSA National Convention Careers Expo 9 July 2015, Melbourne, Victoria

NSW AMA Careers Expo 8 August 2015, Sydney, New South Wales

WA Medical Careers Night 12 April 2016, Burswood, Western Australia

AMA VIC Careers Expo 30 April 2016, Melbourne Victoria

60TH ANNIVERSARY OF THE COLLEGE 1956-2016

If the Founding Fellows of the College could have been present at the Pathology Update 2016 Conference Dinner, we like to think they would have felt very satisfied, and not just by the magnificent birthday cake produced by the Melbourne Convention Centre! They would have thoroughly enjoyed the superb presentations by pathologists who graduated in each decade of the College's growth. The words, feelings and message of each person were warmly received by the audience and were the perfect celebration as in every way they highlighted the fact that the College is not just a structure, it is about the people in it. Each dinner guest received a delightful 60th anniversary commemorative key ring.

The theme of 'people' was further enhanced by an exhibition on display over the three days of Pathology Update, "60 years young: a College and its stories". Interactive screens enabled visitors to 'stroll' up and down the history timeline, stopping at items that caught their interest. It is a tribute to the College history that the biggest category on display was "outstanding individuals". So many people have willingly given of their time and expertise and continue to do so, their individual efforts adding to the whole, a whole which has achieved respect and admiration from many quarters.

Earlier anniversaries (25th and 50th) were marked by the publication of College history books. On this occasion, and in keeping with current technology, the College Timeline history exhibition is now available as an online resource (which can be updated) on the College website. Fellows are encouraged to enjoy this resource, freely available under the 'About the College' (choose the bottom option 'History of the College' then click on Timeline).



60th celebration cake



60th celebration
cutting the cake

60th Anniversary of the College 1956-2016



An overview of the historical display



Prof Ian Frazer in front of his Timeline entry



Photos of all past College Presidents' were on display



Dr Edwina Duhig was honoured to stand at her grandfather's Timeline entry



Interactive history screen and some of the memorabilia



Prof Brett Delahunt at his Timeline entry



Covers of the journal over the years

RCPA FOUNDATION



The Constitution of the College specifies 18 objectives for which it was established. The first objective is “to promote the study of the science and practice of pathology in relation to medicine.” There are many further references to developing and supporting researchers, and to increasing knowledge, throughout the Constitution. These references serve as a reminder of where our priorities should lie, a reminder which is very timely during this 60th anniversary year of the College.

Medical research yields both direct and indirect benefits. The direct benefit is evident in improved health care derived from new knowledge, methods and processes. The indirect benefits are seen in the constructive critical thinking which ensures that contemporary practice is applied well, and adapts to advances in our understanding.

If the College is to achieve these noble aspirational goals, our people need to be enabled. Your RCPA Foundation is doing just that. The award recipients have the ability to do great things, furthering their own knowledge and skills, and sharing their gains with others. Of course, each person may contribute only a small step in a large project, but every little piece helps the whole fall into place. The Grants sub-committee chaired by A/Prof Beverley Rowbotham has devoted many hours to considering the applicants for awards, and we are grateful for their commitment.

The RCPA Foundation is proud of what it is doing and more is needed to encourage and assist Fellows and Trainees of the College in their “study of the science and practice of pathology”. The donation so generously paid by Fellows with their annual subscriptions has once again provided further funds for the RCPA Foundation. On behalf of the Board of the Foundation, the recipients, the College community, and the patients whose care we provide, I thank you.

The Board recognises that many Fellows want to ‘give back’ to the profession which nurtured and supported them over many years. Fellows of this College understand all that pathology entails. Progress in research and discovery in our specialty must come from the pathologists and senior scientists of the future. A bequest that is arranged by one of today’s Fellows would benefit tomorrow’s Fellows, the specialty we represent, and tomorrow’s patients. Please contact the Foundation to explore this option further, in confidence and without obligation.

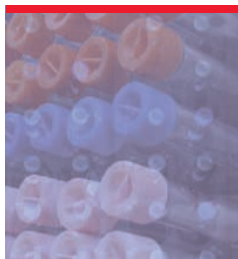
As is the case with all College committees, appointments to the RCPA Foundation are honorary, including our lay representative, and our administrative needs are covered by the College. This means that all funds raised are used for awards.

The RCPA Foundation is still very young and building its reserves. I trust that Fellows will continue to support the Foundation in established and new ways, and help us build a resource that advances pathology. Board Members and College staff are always available to discuss ways for individuals and organisations to offer financial gifts.

It has been a pleasure and a privilege to Chair the RCPA Foundation and I encourage all Fellows to lend their support.

Prof Graeme Suthers
RCPA Foundation Chair





FELLOWSHIPS AWARDED

1 July 2015 - 30 June 2016

FELLOW FRCPA

Rishu Agarwal

Asma Ashraf

Mohammad Atarod

Yuen Ling Au

Dimitar Azmanov

Khalid Batarfi

Samuel Bennett

Krystal Bergin

Amber Biscoe

Danielle Blunt

Walaa Borhan

Jennifer Borowsky

Jack Bourke

Catriona Buchanan

Chandra Bura

Tina Carter

John Casey

Fiona Chan

Shijia Chan

Alison Cheah

Kim Choy Cheah

Srilakshmi Chennapragada

Yee Jia Chua

Dylan Close

Gregory Corboy

Palliyaralage De Almeida

Rosslyn De Wet

Siddhartha Deb

Rosanne Devadas

Michelle Dickson

Amalika Edirisinghe

Matthew Facey

Mahtab Farzin

Pasquale Fedele

Carrie Gallivan

Giap Hean Goh

Yael Grasko

Nadir Hasan

Swe Htet

Swée Hue

Anna Hutchinson

Bernard l'Ons

Louise Jackett

Kalani Kahapola Arachchige

Kwok Ling Kam

Simon Kavanagh

Shane Kelly

Edwin Kirk

David Kliman

Mrudula Krishnaswamy

Victoria Kueppers

Lai-yang Lee

James Liang

Hui Ling Lim

Rose Linda

Yee-May Ling

Cheng Liu

Pohan Lukito

Raha Madadi Ghahan

Samuel Maloney

Eleni Mayson

Rachel Maywald

Fellowships Awarded

Mikkaela McCormack

Derek McCulloch

Kathleen Merrick

Carina Miles

Allison Mo

Erin Morris

Iram Naaz

Asma Naveed

Mang Ting Ng

Kah Wai Ngan

Thi Ngoc Lan Nguyen

Jordanco Nizamovski

Ethan Oost

Amanda Ormerod

Manika Pal

Archana Pandita

Lito Papanicolas

Freda Passam

Dominic Pepperell

Edward Raby

Sooraj Rajendran Pillai

Geetha Rathnayake

Robert Rawson

Jawad Saab

Mirette Saad

Marie Salib

Indunil Sandaradura

Mahsa Seyed Ahadi

Naranie Shanmuganathan

Nicholas Shaw

Nicole Sladden

Kate Stanton

Magreet Strauss

Vishnu Subramanian

Char Tan

Katrina Tang

Yee Lin Tang

Valli Thanni

Nicola Townell

Sheela Upreti

Ana Varallo-Nunez

Ana Vargas Calderon

Fathima Vilcassim

Jacoba Von Wielligh

Martin Weber

Robert Weinkove

Andrew Whyte

Corwin Willys

Yancey Wilson

Charmaine Wong

Eric Wong

Fraser Wright

Victoria Yachmenikova

Paul Yeh

Chun Wing Yeung



Fellowships Awarded

FELLOW FSc

Louise Carey
Mark De Hora
Lawrence Greed
Man-har Vanessa Lo
Louise Wienholt

FELLOW FSc (Research)

Stuart Blacksell
Marcel Dinger
Maria Fuller
Andrew Georgiou
Susan McLennan
Peter Simpson
Andrew Taylor-Robinson

Founding Fellow FCFM

R.R.G. Sriyantha Amararatne
Bernadette Butler
Vasudeva Challakere Ramaswamy
Jan Connors
Terence Donald
Roy Donnelly
Jane Edwards
James Eldridge
Kim Farrington
Leslie Griffiths

Glenys Griffiths
Eric Hinder
Alistair Irvine
Faika Jappie
Susan Jennings
Tracy Johns
Kathleen Kramer
Wai Kwok Lam
Susan Marks
Christine Mirakian
Maaïke Moller
Edward Ogden
John Payne-James
Tracy Pickett
Vinay Rane
Nicole Reid
Jillian Roberts
Fiona Sluchniak
Debbie Smith
Carol Stevenson
Upul Tennakoon
Deanna True
Alexandra Tyson
Amanda Van Diemen
Ian Wall
Peter Wearne
Peter Winterton
Damian Wojcik



AWARDS PRESENTED 2016

Honorary Fellowship:

Dr Debra Graves

Distinguished Fellow Award

Associate Professor Lynda Campbell

Meritorious Service Award

Dr Andrew Tie

Mr Michael Ralston

Outstanding Teaching Award

Dr Jacqui Gardner, Fellow NZ

Ms Sarah Morabito, Scientist Vic

RCPA Foundation Research Award

Dr Cameron Snell

RCPA Mike and Carole Ralston Travelling Scholarship

Dr Arran Schlosberg

RCPA Foundation Kanematsu/Novo Nordisk Research Award

Dr Freda Passam

The Neil Prentice Memorial Prize

Dr Helen O'Neill

The Eddie Hirst Memorial Prize

Dr Geoffrey Arthurson

D S Nelson Trainee Prize

Dr Gemma Robertson

Board of Education and Assessment Trainee Poster Prize

Dr Kay Weng Choy

RCPA QAP Pty Ltd Oral Presentation Prize

Dr Jeremy Brown

RCPA QAP Pty Ltd Poster Presentation Prize

Dr Nora Lee



INFORMATION ON DIRECTORS



Dr Michael Harrison
President

BSc (Med) MBBS (1st class honours) FRCPA

A medical graduate of the University of Queensland, Michael Harrison was admitted to the fellowship of the College in 1984 as a general pathologist. Since that time he has practised at Sullivan Nicolaides Pathology, principally in the fields of chemical pathology and microbiology. He became CEO/ Managing Partner of SNP in 2002. He has been a member of the Queensland State Council since 2003 and Queensland State Councillor 2008-2011. Other current roles include Chairman of the Quality Use of Pathology Committee from 1999, Chairman of the Medical Testing Accreditation Advisory Committee from 1999, Member National Pathology Accreditation Advisory Council 2008-9, currently a member of APC and Member, Diagnostics Expert Advisory Panel, National Prescriber Service. Past roles include PSTC and PCC member, Statistics Subcommittee of PCC/PSTC and Chairman of AAPP.



Dr Michael Dray
Vice President, New Zealand

MBChB (Otago), DCH, Dip Obst, FRCPA

Michael Dray is a Consultant Histopathologist based at Waikato Hospital. He gained his medical degree from the University of Otago. His initial medical career saw him in General Practice for several years prior to training in Anatomical Pathology in Sydney, NSW for 5 years before returning to New Zealand in 2006. He spent 6 years working at Middlemore Hospital, South Auckland, before moving to his current position. He is also Chair of the NZ Committee of Pathologists, a Senior Lecturer at the University of Auckland being an active member of the Bone & Joint Research Group, Secretary of the NZ Society of Pathologists, a Coronial Pathologist and member of the IANZ Medical Testing Professional Advisory Committee.



Dr Bruce Latham
Vice President

BMed Sci (Hons), MBBS, FRCPA

Bruce Latham is a graduate of the University of Western Australia. He carried out his Anatomical Pathology training predominantly at Royal Perth Hospital and was admitted to Fellowship in 1995. Bruce has worked as an Anatomical Pathologist in both the public and private sector, and is currently an Anatomical Pathologist with PathWest at Fiona Stanley Hospital where he has a diagnostic and research interest in breast and pulmonary pathology. He is the Chair of the RCPAQAP Anatomical Pathology General Module Committee and is an Adjunct Associate Professor at Notre Dame University. He was previously the RCPA State Councillor for Western Australia and a member of the Anatomical Pathology Advisory Committee.

Information on Directors



Dr Jan Kencian
Secretary/Treasurer

BMed (hons) FRCPA

Jan Kencian has held the role of supervising pathologist for Sullivan Nicolaides in Cairns, Queensland since 2004. In 2003 she worked at the Brisbane laboratory and prior to that at laboratories in Cairns. Her resident training was at Royal Newcastle and Gosford Hospitals and she undertook anatomical pathology as a registrar at Royal North Shore Hospital, St Leonards NSW achieving FRCPA in 1988. Jan has held several roles over the years with IAP and was Treasurer of IAP Australasian Division for 3 years and a Board member for 5 years. Over the years she has represented Far North Queensland on many groups including Queensland Breast Screen and Queensland State Cervical Cytology Register Working Group. She was elected as RCPA Secretary/Treasurer in November 2013, the first person to hold the new dual role.



Prof Tony Landgren
Chairman, Board of Education and Assessment

MBBS LLB FRCPA FACLM MRACMA Barrister & Solicitor Supreme Court of Victoria.

Tony Landgren is a graduate in Medicine and Law from the University of Melbourne. He trained in Anatomical and Forensic Pathology in Victoria and was admitted to Fellowship in 1990. Tony has worked as a pathologist and administrator in private and public practice in Australia, New Zealand, Malaysia, Singapore and the United States. He is Chair of the Department of Anatomical Pathology at the Royal Melbourne Hospital and Medical Director/Chief Pathologist at Australian Clinical Labs. His legal practice specialises in Commercial and Biotechnology Law. He holds academic appointments at the University of Melbourne. He is a Director of RCPA Quality Assurance Programs Pty Ltd, Chair of the RCPA Board of Education and Assessment, a Director of NATA and Chair of the Victorian Cancer Biobank.

Information on Directors



Dr Lawrence Bott
Chairman, Board of Professional Practice and Quality

MBBS (Hons), FRCPA

Lawrie Bott graduated from the University of Sydney and trained in pathology at Concord Hospital in Sydney. Since obtaining Fellowship (1989), he has worked as a General Pathologist in private practice in NSW, country Victoria, and Tasmania. He joined Barratt & Smith Pathology in 1990 and was made CEO in 1995. In 2000 became CEO at Southern Pathology (now Southern IML) Wollongong. In 2006 he moved to Tasmania, as CEO of Diagnostic Services Pty Ltd comprising Hobart, Launceston and North West Pathology.

Lawrie served as RCPA Honorary Secretary (2000-2004), Chair of the Overseeing Committee for Pathology Update 2001 to 2004, NSW State Councillor (2005-2007), Member, Deputy Chair and Chair of PPAC from 2004 and now Chair of BPPQ. He is also a Director of RCPA Quality Assurance Programs Pty Ltd (2000 to present), was Councillor for Tasmania (2011-2013) and has served on many College committees, particularly related to Informatics and e-Health. He has been a representative on many external organisations and holds a RCPA Meritorious Service Award received in 2013.



Professor Roger Wilson
Council Representative for States and Regions

MBChB, FRCPA, FRACMA, Dip Microbiol, Grad Dip Health Law (with Distinction)

Roger graduated from Otago University in 1977 and rotated through each discipline of pathology at Dunedin Hospital before completing training in microbiology at Royal North Shore Hospital Sydney and being admitted to Fellowship (1985). He was a consultant Clinical Microbiologist at Royal Perth Hospital from 1986 and moved to the Nepean & Blue Mountains Pathology Service in 1996 as Director of Pathology. Appointed Executive Director of South Eastern Area Laboratory Services (SEALS) in 2001 he remained there until appointed as inaugural Chief Pathologist of 'NSW Health Pathology' in April 2013. Roger is a Fellow of RACMA, holds an appointment as Conjoint Professor at UNSW, was President of NCOPP (2006-2010), has represented NSW Health on NPAAC since 2007 and was recently Chair of NPAAC Strategy and Risk Committee in 2016. Roger was elected Councillor for NSW/ACT in 2012 and in November 2013 appointed to the Board of Directors by the Council Committee representing State and Regional Councillors.

Information on Directors



Associate Professor Merrole Cole-Sinclair
Council Representative, Advisory Committees

BSc (Hons) MBBS FRCPA FRACP FFSc

A graduate in Medicine and Science from the University of Melbourne, Merrole trained in laboratory and clinical haematology through the Joint Specialist Advisory Committee [JSAC, RCPA and RACP] and has been a staff specialist in the Victorian public hospital sector since returning to Australia in 1993 after a Clinical Research Fellowship in London. She is currently Director, Laboratory Haematology at St Vincent's Health Melbourne and holds an Honorary Academic Appointment with the Department of Pathology at the University of Melbourne. Merrole has an interest in diagnostic haematology and transfusion medicine and since 2008 has chaired the Transfusion Outcomes Research Collaborative, an ARCBS and Monash University partnership. She served as RCPA Chief Examiner in Haematology (2007-2012) and Chair of JCTC for Haematology and currently Chairs the RCPA Haematology Advisory Committee. Council appointed her in November 2014 to the Board of Directors as the Discipline Advisory Committee representative.



Dr Sophia Otto
Council Representative, General

MBBS, FRCPA

Dr Sophia Otto graduated from the University of Adelaide in 1983, and after a period of Surgical Residency, worked for many years in her own General Practice, as well as serving as Director and Owner of the Surgical Assistants' Service, an employer of doctors providing assistance to surgeons in all specialty groups. She commenced Anatomical Pathology training in late 2001 and when she graduated 5 years later was appointed as a Staff Specialist by SA Pathology at their Royal Adelaide Hospital (RAH) site. She has an interest in renal biopsy pathology as well as head and neck, lymphoma, neuro-oncology and soft tissue pathology. She was appointed as Divisional Head of the Department of Surgical Pathology (RAH site) in 2014. In 2011 Sophia was elected as State Councillor for SA/NT and appointed to the Board of Directors by the Council Committee as the General Council Committee representative in November 2013.



VALE

From 1 July 2015 to 30 June 2016 the College learnt of the passing of the following members.

Dr David Maxwell O'Neill Becroft

Dr Peter Ellis Campbell

A/Prof Laurence Preston Catley

Dr John Warwick Earl

Dr Jocelyn Olive Helen Farnsworth

Professor Priscilla Sheath Kincaid-Smith

Dr Alan John Idris Lloyd

Dr Vladimir Albert Lovric

Dr Alexander Charlie Ritchie

Prof Geoffrey Randolph Shellam

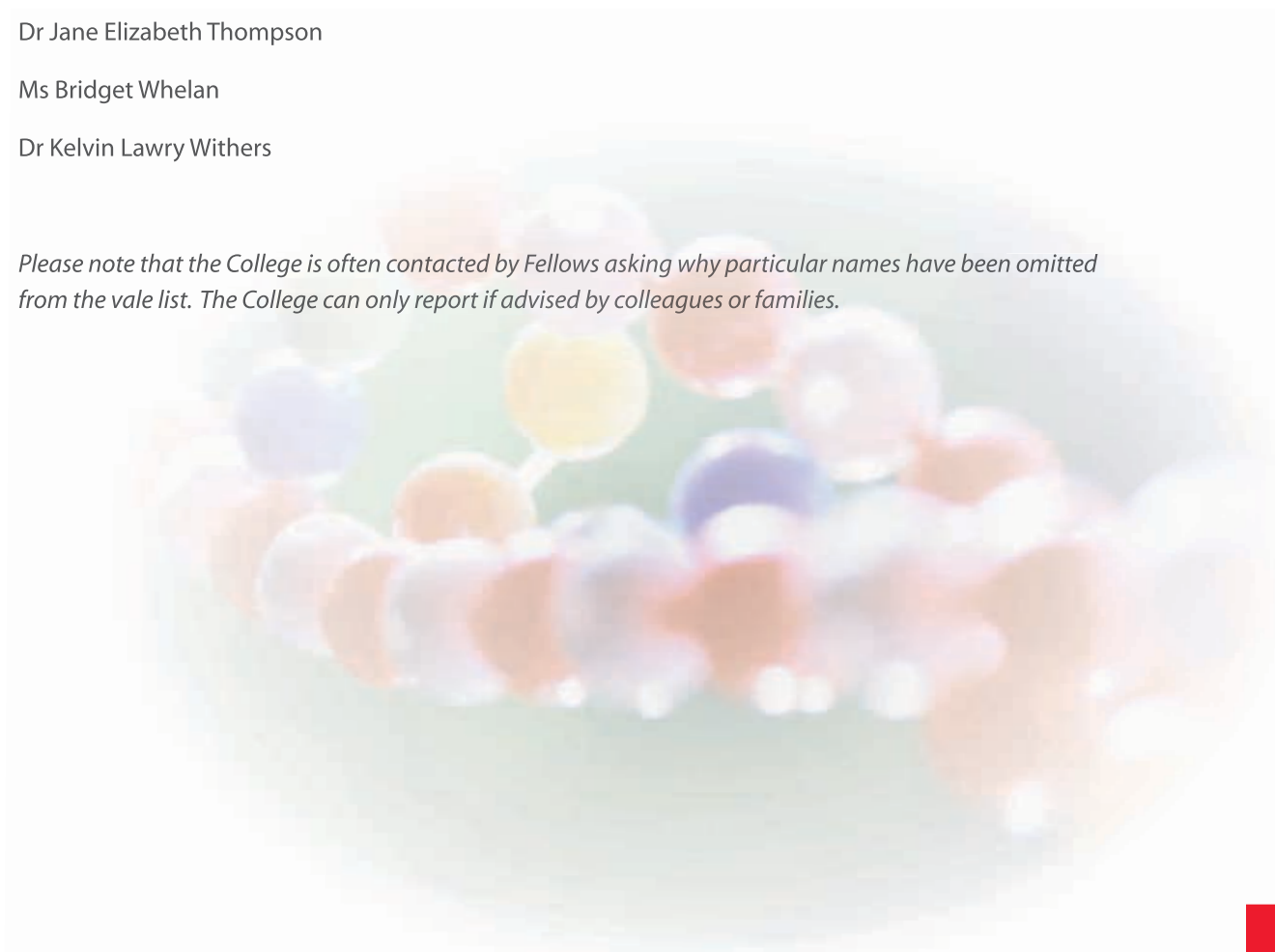
Dr Alexander Stewart Spiers

Dr Jane Elizabeth Thompson

Ms Bridget Whelan

Dr Kelvin Lawry Withers

Please note that the College is often contacted by Fellows asking why particular names have been omitted from the vale list. The College can only report if advised by colleagues or families.





OBITUARIES

Dr David Maxwell O'Neill Becroft ONZM

1928 - 2015

David Becroft was born in Auckland, the grandson of a New Zealand immigrant to Port Albert on the Kaipara harbour, where David grew up. He went to school at King's College in Auckland, where he was dux, and then studied medicine at the University of Otago, graduating in 1952 and in 1962 received a Doctorate of Medicine from the University of Otago.

He also trained in Boston, Cincinnati, Los Angeles and London. He had academic appointments in three departments in the School of Medicine at Auckland University and published over 130 peer-reviewed papers, many of them seminal. By the time of his retirement he was a Fellow of the Royal College of Pathologists of Australasia (RCPA), a Fellow of the Royal Australasian College of Physicians (FRACP), a Fellow of the Royal Australian and New Zealand College of Obstetrics and Gynaecology (FRANZCOG) and a Fellow of the Royal College of Pathologists (FRC Path). In addition, he was Chair of the International Association of Paediatric Pathologists, clear recognition of his internationally-recognised expertise in the field.

David was appointed an Officer of the New Zealand Order of Merit (ONZM) in 2001 in recognition of his services to medicine. Considered a giant amongst paediatric and perinatal pathologists David Becroft was a humble and kind man. David gave far beyond the field of medicine through his friendship, mentorship, wisdom and philanthropy of the arts and medical science.

Dr Peter Ellis Campbell

1930 - 2015

Peter Campbell, paediatric pathologist and esteemed colleague since the inception of VIFM died in August 2015 aged 84, after a long illness.

Peter was a wonderful educator, a very astute and careful pathologist, and a friend to many. He served the community of Victoria with dedication and compassion over many years, particularly those families who faced the awful tragedy of a sudden infant death.

Peter's contribution to the life and work of the Institute was extraordinary, and many people can attest to being the grateful beneficiaries of his knowledge, enthusiasm and experience. He will be fondly remembered and greatly missed.



Obituaries

A/Prof Laurence Preston Catley

1964 - 2015

Adelaide born and bred Laurie (as he was known), was dux of his year at Adelaide High School in 1981, and completed his haematology training in 1999 at IMVS. He was a senior and most respected clinician and researcher at the Mater Hospital, Brisbane. As an experienced haematologist, his special interest was in the care of patients with myeloma and thalassemia.

A man of many talents, in addition to being an excellent clinician/scientist he loved sailing and music, and was in fact an accomplished musician. He trained as a classical guitarist and performed at many hospital charity events. His research interests were developed at the Dana-Farber Cancer Institute in Boston, Massachusetts where he was privileged to be part of some major breakthroughs in the development of new effective treatments for haematological malignancies which have significantly extended life expectancy of many patients with malignant haematological disease.

In 2006 Dr Catley became Director of Haematology at the Mater in Brisbane, as well as Research Associate at Mater Research. He continued to investigate new treatments as a clinical haematologist and contributed to scientific research at the Mater Research Institute. He served for many years on the Mater Research Scientific and Human Research Ethics committees, and chaired medical grand rounds each week. He has been recipient of numerous awards, including an International Myeloma Foundation Senior Research Award. Laurie passed away suddenly at the age of 50 en route to a European conference.

Dr John Warwick Earl

1948 - 2016

John Earl gained his BSc in 1968 and a PhD in 1977. He joined Royal Alexandra Hospital for Children, Camperdown in 1979 as Developmental Biochemist and Deputy Head of the Biochemistry Department. Since then, he had a distinguished career in the field of paediatric clinical biochemistry. He made major contributions in the liquid chromatographic measurement of catecholamines and neurotransmitters in children and ran a specialised neurotransmitter laboratory which receives samples for all over Australia, New Zealand and South East Asia. He was acknowledged world wide as an expert in neurotransmitter disorders and their diagnosis and had over 70 publications in the field of paediatric biochemistry.

Dr Earl was a Founding Fellow of the Faculty of Science of the College. He was convenor of the Australasian Association of Clinical Biochemists Working Party on Biogenic Amines, and a past treasurer, secretary and Chair of the NSW/ACT Branch of the AACB. A wonderful and knowledgeable person to talk to, John had a very calm and thoughtful manner. He was very active scientifically and professionally in the AACB and active industrially, arguing the case for recognition of hospital scientists on many occasions.

His passing was a huge loss to the scientific community and AACB lost one of its most loyal and committed members; John was the absolute creator and instigator of the chromatography group and the one who kept pushing for "young blood".



Obituaries

Dr Jocelyn Olive Farnsworth

1936 - 2015

A Fellow of the College since 1971, Jocelyn specialised in histopathology and was an all rounder excelling in many areas - medicine, art, sport, sewing, photography, gardening and cooking. She obtained a pilot's licence in the 1970s and completed an art diploma at the ANU School of Art in the 1980s, designed and planted many gardens and competed in (and won) almost too many sporting events to count.

Jocelyn started life as a country girl but the family moved to Sydney where she completed schooling at North Sydney Girls High and gained a scholarship to Sydney University, one of very few women studying medicine. She later specialised in histopathology and achieved FRCPA in 1971. Over time she was recognised as a leading expert in two quite different areas, gut and skin; she was also an Associate Fellow of the College of Dermatologists. Much later, she moved to Canberra and for several years was the only pathologist at the Canberra Hospital. When the laboratory moved to Woden she resigned and set up a private histopathology laboratory to provide the support the clinicians at the hospital required, a move which proved to be very successful.

When the hospital closed, Jocelyn sold the practice and then worked for the new owners for a while before moving to Brisbane with her family where she continued her work until eventually succumbing to Alzheimer's Disease, passing away in November 2015.

Dr Priscilla Kincaid-Smith

1926 - 2015

Priscilla Kincaid-Smith, was a world-renowned nephrologist and trailblazer for Australian women, first female professor at the University of Melbourne in 1975, first female President of the RACP, first female chair of the AMA and the first female (and first Australian) chair of the World Medical Association.

Born in South Africa, at 16 she entered university and sailed through her medical degree. Later, in London she married a fellow doctor, and in the 1950s they moved to Australia. On arrival she was shocked to discover married women were not allowed to work (despite her work as a highly acclaimed, dual-qualified physician and pathologist in London). She fought this and many other gender biases of the time (particularly at the University of Melbourne). Within a year she held research positions at the Baker Institute and the University, plus an Honorary Physician position at the Queen Victoria Hospital. Within a decade she was appointed Director of Nephrology at Royal Melbourne Hospital (1967).

One of Dr Kincaid-Smith's most important discoveries was identifying the link between the overuse of headache powders Bex and Vincents and kidney disease in the early 1960s. Focused on prevention, she then actively lobbied for restrictions on the availability of the analgesics thus helping to remove kidney disease as a result of headache powders.

Dr Kincaid-Smith was also heavily involved in setting up the renal transplant unit at the Royal Melbourne Hospital. During the 1970s, she concentrated on the prevention of renal failure before being appointed professor of medicine at the University of Melbourne, a position she held until retirement in 1991. Dr Kincaid-Smith published over 480 original papers in refereed scientific journals, 103 book chapters, wrote three books herself and edited a further ten. In 1975, she was made a Commander of the Order of the British Empire "for services to medicine". In 1989 she was awarded the David Hume Award from the National Kidney Foundation (USA) the same year she was awarded Companion of the Order of Australia.

Obituaries

Dr Vladimir Albert Lovric

1926 - 2015

Born in Belgrade life for Vladimir was suddenly interrupted by World War II. His family fled to the mountains and Vlad joined the Partisans Liberation Army. Although just a teenager he was put in charge of a cavalry unit of 200 men, 100 horses and three cannons. On discharge in 1948 he was decorated for bravery. After four years of medicine at the University of Belgrade, politics intervened again and the family moved to Australia in 1951 where he completed medicine (from third year) at the University of Sydney.

Vlad or Al as he was known, was a respected haematologist and researcher. He was the Deputy Director of the Australian Red Cross Blood Service and pioneered the use of whole blood separation techniques in regional NSW. He was the originator of the "Lovric-Wisdom circle pack," a storage system for donated blood. His innovations in component separation and anticoagulant solutions fundamentally altered blood banking in Australia by allowing better component collection, mainly plasma for immunoglobulins, clotting factors and platelets, which meant that up to five patients could benefit from a single blood donation.

He consulted to WHO in South East Asia, instituting efficient blood transfusion practices and limiting HIV infection risk. His recommendations regarding blood utilisation techniques, anticoagulation and screening procedures have been internationally recognised and utilised. The Australian Red Cross awarded him the Distinguished Service Medal in 1990. Vlad was the first haematologist at the Children's Hospital, (when it was based at Camperdown), and a pioneer in paediatric haematology laboratory practice.

Dr Alexander Charles Ritchie

1921 - 2015

Born in Auckland NZ in 1921 Alexander completed his medical training in 1944 and went on to do a DPhil in pathology at Oxford in 1950 and soon after spent 7 years at McGill in Canada as Head of the pathology department dealing with problems of inadequate facilities for clinical teaching and research. He gained FRCPA in 1972.

Alexander was Professor and Head, Department of Pathology, University of Toronto; Pathologist-in-Chief, Toronto General Hospital. Formerly Miranda Fraser Professor of Comparative Pathology, McGill University; Departmental Demonstrator in Pathology, University of Oxford; President, Canadian Association of Pathologists; President, World Association of Societies of Pathology.



Obituaries

Prof Geoffrey Randolph Shellam

1943 - 2015

Geoffrey Shellam was well respected internationally in the fields of science and medicine. He completed a Bachelor of Science majoring in microbiology and biotechnology at the University of Melbourne, where he also undertook a PhD in immunology with the Walter and Eliza Hall Institute of Medicine. He then worked at the Commonwealth Serum Laboratories before receiving a Royal Science Fellowship which allowed him to study tumour immunology as a post-doctorate student at a university in London.

He won the prestigious Eleanor Roosevelt International Cancer Fellowship to research at the National Cancer Institute in Maryland, USA before going to The University of Western Australia as a Post-doctoral Fellow in 1977 and Professor of Microbiology in 1985. Later he was appointed UWA Professor of the School of Pathology and Laboratory Medicine, and Co-Director of The Marshall Centre for Infectious Diseases Research and Training.

A Founding Fellow of the Faculty of Science (RCPA), Geoffrey was also a Fellow of the Royal College of Pathologists in the United Kingdom and Director of the Master/Graduate Diploma in Infectious Diseases Program. Over many years he made a significant contribution to international research, particularly in the areas of infectious diseases, microbiology, and pathology.

Ms Bridget Whelan

1974 - 2016

A respected consumer member of the Lay Committee of the College, Bridget Whelan passed away in May 2016. She was first diagnosed with Ovarian Cancer in 2010 and from then on worked hard to raise awareness of Ovarian Cancer via many Cancer Awareness organisations using her professional skills in her volunteer work as a consumer advocate, ensuring that the consumer experience informs cancer research, information, policy and care. It was in this vein that she took on a position as a member of the Lay Committee of the College. Prior to her diagnosis, Bridget was a qualified lawyer and senior adviser to several State and Federal Government Ministers.

Bridget's commitment to improving outcomes for women with ovarian cancer showed in her extensive and diverse work for a number of organisations throughout her treatment and recovery cycles. She worked with Ovarian Cancer Australia; the Australia and New Zealand Gynaecological Oncology Group; Cancer Voices; and Cancer Institute NSW. Ms Whelan also provided consumer input into research programs for Calvary Hospital, University of New South Wales, Garvan Institute, Westmead Hospital and the Peter MacCallum Cancer Centre.



MEETINGS OF THE BOARD OF DIRECTORS

During the financial year 1 July 2015 to 30 June 2016 twelve (12) meetings of the Board of Directors took place.

Alphabetical list of Directors	Directors Meetings	
	<i>Eligible to attend</i>	<i>Number attended</i>
Dr Lawrence Bott	12	9
A/Prof Merrole Cole-Sinclair	12	10
Dr Michael Dray	12	12
Dr Michael Harrison	12	11
Dr Janet Kencian	12	10
Prof Anthony Landgren	12	11
Dr Bruce Latham	7	7
Dr Sophia Otto	12	9
A/Prof Peter Stewart	5	4
Prof Roger Wilson	12	10



INDEMNIFYING OFFICERS OR AUDITOR

During or since the end of the financial year the College has given an indemnity or entered an agreement to indemnify, or paid or agreed to pay insurance premiums as follows:

The Insurer agrees to pay on behalf of each Insured Person(s) all Loss for which each Insured Person(s) may not be indemnified by the College and which such Insured Person(s) becomes legally obligated to pay on account of any Claim first made against him/her individually or otherwise and notified to the Insurer during the Period of Insurance for a Wrongful Act after the Retroactive Date. For these purposes the Insurer will not be liable to pay where to do so would be prohibitive by law.

Director, Councillor and Officer mean any past, present or future Director, Secretary, Executive Officer or employee of the College.

The company has paid premiums to insure each of the Councillors/Directors against liabilities for costs and expenses incurred by them in defending any legal proceedings arising out of their conduct while acting in the capacity of Councillor/Director of the College, other than conduct involving a wilful breach of duty in relation to the College. The amount of the premium was \$8,287 covering all Councillors/Directors and Officers within Australia and Members of the New Zealand Committee.

Options

The College is not in the practice of issuing share options as it is a Not for Profit organisation.



PROCEEDINGS ON BEHALF OF COLLEGE

No person has applied for leave of Court to bring proceedings on behalf of the College or intervened in any proceedings to which the College is a party for the purpose of taking responsibility on behalf of the College for all or any part of those proceedings.

Signed in accordance with a resolution of Directors.

Michael Harrison
President

J Kencian
Secretary/Treasurer

Dated this 28th day of September 2016



DIRECTORS' DECLARATION

In the directors' opinion:

- The company is not a reporting entity because there are no users dependent on general purpose financial statements. Accordingly, as described in note 1 to the financial statements, the attached special purposes financial statements have been prepared for the purposes of complying with the requirements of the members to prepare and distribute financial statements to the members of The Royal College of Pathologists of Australasia;
- The attached financial statements and notes thereto comply with the requirements of the members, the Accounting Standards as described in note 1 to the financial statements, and other mandatory professional reporting requirements;
- The attached financial statements and notes thereto give a true and fair view of the company's financial position as at 30 June 2016 and of its performance for the financial year ended on that date; and
- There are reasonable grounds to believe that the company will be able to pay its debts as and when they become due and payable.

Signed in accordance with a resolution of directors.

On behalf of the directors



Michael Harrison

President



J Kencian

Secretary/Treasurer

Dated this 28th day of September 2016

AUDITOR INDEPENDENCE DECLARATION

DECLARATION OF INDEPENDENCE BY JOHN BRESOLIN TO THE DIRECTORS OF THE ROYAL COLLEGE OF PATHOLOGISTS OF AUSTRALASIA

As lead auditor of The Royal College of Pathologists of Australasia for the year ended 30 June 2016, I declare that, to the best of my knowledge and belief, there have been:

1. No contraventions of the auditor independence requirements of the Australian professional ethical pronouncements to the audit; and
2. No contraventions of any applicable code of professional conduct in relation to the audit.



John Bresolin
Partner

BDO East Coast Partnership

Sydney, 28 September 2016

BDO East Coast Partnership ABN 83 236 985 726 is a member of a national association of independent entities which are all members of BDO (Australia) Ltd ABN 77 050 110 275, an Australian company limited by guarantee. BDO East Coast Partnership and BDO (Australia) Ltd are members of BDO International Ltd, a UK company limited by guarantee, and form part of the international BDO network of independent member firms. Liability limited by a scheme approved under Professional Standards Legislation, other than for the acts or omissions of financial services licensees.

STATEMENT OF PROFIT OR LOSS

STATEMENT OF PROFIT OR LOSS AND OTHER COMPREHENSIVE INCOME FOR THE FINANCIAL YEAR ENDED 30 JUNE 2016

	Note	2016 \$	2015 \$
Subscription and training revenue	3	6,558,772	6,303,073
Grant revenue	5(b)	12,675,796	12,517,006
Other revenue	4	1,095,371	916,993
Loss on financial assets held at fair value through profit or loss		(135,078)	(30,294)
Employee benefits expense		(3,642,910)	(3,397,521)
Depreciation expense	5(a)	(185,512)	(161,504)
Conferencing/education expense		(1,342,482)	(1,016,341)
Impairment of assets	11	-	(148,185)
Professional fee expense		(488,938)	(449,449)
Premises expense		(172,755)	(141,719)
Travel and accommodation expense		(725,750)	(684,513)
Grant expense	5(b)	(12,675,796)	(12,517,006)
Other expenses		(517,385)	(629,195)
Finance and investment costs	5(a)	(140,308)	(147,480)
Profit before income tax		303,025	413,865
Income tax expense	1(a)	-	-
Profit after income tax		<u>303,025</u>	<u>413,865</u>
Other comprehensive income:			
Other comprehensive income for the year net of income tax		-	-
Total comprehensive income for the year		<u><u>303,025</u></u>	<u><u>413,865</u></u>

STATEMENT OF FINANCIAL POSITION

STATEMENT OF FINANCIAL POSITION AS AT 30 JUNE 2016

	Note	2016 \$	2015 \$
CURRENT ASSETS			
Cash and cash equivalents	6	6,535,531	7,452,365
Trade and other receivables	7	3,173,161	2,553,774
Other current assets	8	341,018	261,794
Financial assets	9	7,145,934	7,064,865
TOTAL CURRENT ASSETS		<u>17,195,644</u>	<u>17,332,798</u>
NON-CURRENT ASSETS			
Investment in subsidiary company	10	2	-
Financial assets	9	7,107	7,107
Property, plant and equipment	11	4,218,763	4,292,430
TOTAL NON-CURRENT ASSETS		<u>4,225,872</u>	<u>4,299,537</u>
TOTAL ASSETS		<u>21,421,516</u>	<u>21,632,335</u>
CURRENT LIABILITIES			
Trade and other payables	12	604,875	710,231
Short term borrowings	13	6,237	24,836
Short term provisions	14	686,154	557,454
Other current liabilities	12	9,238,500	9,833,951
TOTAL CURRENT LIABILITIES		<u>10,535,766</u>	<u>11,126,472</u>
NON-CURRENT LIABILITIES			
Long term borrowings	13	70,169	-
Long term provisions	14	156,089	149,396
TOTAL NON-CURRENT LIABILITIES		<u>226,258</u>	<u>149,396</u>
TOTAL LIABILITIES		<u>10,762,024</u>	<u>11,275,868</u>
NET ASSETS		<u>10,659,492</u>	<u>10,356,467</u>
EQUITY			
Retained earnings		<u>10,659,492</u>	<u>10,356,467</u>
TOTAL EQUITY		<u>10,659,492</u>	<u>10,356,467</u>

STATEMENT OF CASH FLOWS

STATEMENT OF CASH FLOWS FOR THE FINANCIAL YEAR ENDED 30 JUNE 2016

	Note	2016 \$	2015 \$
CASH FLOW FROM OPERATING ACTIVITIES			
Receipts from subscriptions, training and events (inclusive of GST)		7,423,473	8,426,626
Interest and dividends received		566,486	277,824
Donations received		145,576	346,752
Grant income received (inclusive of GST)		13,157,655	14,423,484
Finance costs paid		(1,276)	(4,015)
Payments to suppliers and employees (inclusive of GST)		<u>(21,933,524)</u>	<u>(21,853,432)</u>
Net cash provided by operating activities	22(b)	<u>(641,610)</u>	<u>1,617,239</u>
CASH FLOW FROM INVESTING ACTIVITIES			
Payments for plant and equipment		(110,647)	(1,021,194)
Proceeds from sale of investments		-	530,000
Payments for investments		<u>(216,146)</u>	<u>(223,978)</u>
Net cash used in investing activities		<u>(326,793)</u>	<u>(715,172)</u>
CASH FLOW FROM FINANCING ACTIVITIES			
Increase in borrowings		93,558	-
Repayment of finance lease commitments		<u>(41,989)</u>	<u>(22,598)</u>
Net cash used in financing activities		<u>51,569</u>	<u>(22,598)</u>
Net increase in cash held		(916,834)	879,469
Cash at beginning of year		<u>7,452,365</u>	<u>6,572,896</u>
Cash at end of year	22(a)	<u>6,535,531</u>	<u>7,452,365</u>

STATEMENT OF CHANGES IN EQUITY

STATEMENT OF CHANGES IN EQUITY FOR THE FINANCIAL YEAR ENDED 30 JUNE 2016

Retained Earnings

	General Fund \$	ER Fund \$	RCPA Foundation \$ (Note 15)	Total \$
Balance at 1 July 2014	6,493,336	2,115,287	1,333,979	9,942,602
Profit for the year	71,896	293,765	48,204	413,865
Other comprehensive income for the year	-	-	-	-
Total comprehensive income for the year	71,896	293,765	48,204	413,865
Balance at 30 June 2015	<u>6,565,232</u>	<u>2,409,052</u>	<u>1,382,183</u>	<u>10,356,467</u>
 Balance at 1 July 2015	 6,565,232	 2,409,052	 1,382,183	 10,356,467
Profit/(loss) for the year	108,349	221,660	(26,984)	303,025
Other comprehensive income for the year	-	-	-	-
Total comprehensive income/(loss) for the year	108,349	221,660	(26,984)	303,025
Balance at 30 June 2016	<u>6,673,581</u>	<u>2,630,712</u>	<u>1,355,199</u>	<u>10,659,492</u>

NOTES TO THE FINANCIAL STATEMENTS

NOTES TO THE FINANCIAL STATEMENTS FOR THE FINANCIAL YEAR ENDED 30 JUNE 2016

1. Significant Accounting Policies

The financial report of The Royal College of Pathologists of Australasia for the financial year ended 30 June 2016 was authorised for issue in accordance with a resolution of Directors, dated 28 September 2016.

The directors have prepared the financial statements on the basis that the company is a non-reporting entity because there are no users who are dependent on its general purpose financial statements. These financial statements are therefore special purpose financial statements that have been prepared in order to meet the requirements of the Corporations Act 2001. The company is a not-for-profit entity for financial reporting purposes under Australian Accounting Standards.

The financial statements have been prepared in accordance with all measurement and recognition criteria, and disclosure requirements of Australian Accounting Standards with the exception of AASB 10 Consolidations and AASB 127 Separate Financial Statements.

The financial statements have been prepared in accordance with the significant accounting policies disclosed below, which the directors have determined are appropriate to meet the needs of members. Such accounting policies are consistent with those of previous periods unless stated otherwise.

The financial statements, except for the cash flow information, have been prepared on an accruals basis and are based on historical costs unless otherwise stated in the notes. Material accounting policies adopted in the preparation of these financial statements are presented below and have been consistently applied unless stated otherwise. The amounts presented in the financial statements are in Australian Dollars which is the College's functional and presentational currency and have been rounded to the nearest dollar. The financial report has been prepared on a going concern basis.

The following is a summary of the material accounting policies adopted by the College in the preparation of the financial report. The accounting policies have been consistently applied, unless otherwise stated.

(a) Income Tax

The College is classified as a scientific and educational institution by the Australian Taxation Office and therefore, in accordance with section 50-5 of the *Income Tax Assessment Act 1997*, is exempt from paying income tax.

(b) Property Plant and Equipment

Items of property plant and equipment, other than those items noted below, are measured on a cost basis and are depreciated over their estimated useful lives using the straight-line method.

Buildings

The College's buildings are heritage listed and are being fully maintained. Accordingly, no loss of service potential has occurred during the financial year. Heritage listed buildings have an indefinite life and accordingly, no depreciation has been charged. In addition, as indicated in Note 10 to the financial statements, the carrying value of the land and buildings is at cost and does not exceed their recoverable amount. Independent building valuations are completed every three years.

Notes to the Financial Statements

NOTES TO THE FINANCIAL STATEMENTS FOR THE FINANCIAL YEAR ENDED 30 JUNE 2015

1. Significant Accounting Policies (continued)

(b) Property Plant and Equipment (continued)

In 2013 an exception was made to this policy for the cost of renovations to the kitchen in Durham Hall. The renovations are estimated to have a useful life of 10 years and are being depreciated on a straight line basis.

Plant and Equipment

Plant and equipment is measured on a cost basis less accumulated depreciation and impairment losses. The carrying amount of plant and equipment is reviewed annually by Directors to ensure that it is not in excess of the recoverable amount from those assets. The recoverable amount is assessed on the basis of the expected net cash flows, which will be received from the asset's employment and subsequent disposal. The expected net cash flows have not been discounted to present values in determining the recoverable amount.

The Directors of the College do not consider the wall hangings, portraits, presidential medallion and chain, historical books, Maori carved panel and the cedar table to be depreciating assets (that is they are capital appreciating assets) and as such no depreciation has been charged to them. The carrying value of these items is at cost.

Depreciation is charged on straight line basis and the rates used for each class of assets are as follows:

Class of fixed asset	Depreciation rate
Owned plant and equipment	5 – 40%
Leased plant and equipment	20%

Web Site Development

The costs of developing the College's web site are recognised as asset and are depreciated over the useful life of the asset. The useful life of the web site is limited due to rapid technological changes and generally would be expected to have a short useful life. Accordingly, a useful life of four years has been adopted for this asset.

(c) Leases

Leases of fixed assets, where substantially all the risks and benefits incidental to the ownership of the asset, but not legal ownership, are transferred to the College and classified as finance leases. Finance leases are capitalised in recording an asset and a liability equal to the present value of the minimum lease payments, including any guaranteed residual values.

Leased assets are depreciated on a straight-line basis over their estimated useful lives where it is likely that the College will obtain ownership of the asset or over the term of the lease. Lease payments are allocated between the reduction of the lease liability and the lease interest expense for the period.

Lease payments under operating leases, where substantially all the risks and benefits remain with the lessor, are charged as an expense through the Statement of Profit or Loss and Other Comprehensive Income on a straight line basis.

Notes to the Financial Statements

NOTES TO THE FINANCIAL STATEMENTS FOR THE FINANCIAL YEAR ENDED 30 JUNE 2016

1. Significant Accounting Policies (continued)

(d) Financial Instruments

Financial instruments are initially measured at fair value on trade date which includes transaction costs when the related contractual rights or obligations exist. Subsequent to initial recognition, these instruments are measured as set out below.

Financial Assets at Fair Value Through Profit or Loss

A financial asset is classified in this category if acquired principally for the purposes of selling in the short-term or it so designated by management and within the requirement of AASB 139: Financial Instruments: Recognition & Measurement. Realised and unrealised gains and losses arising from changes in fair value of these assets are included in the Statement of Profit or Loss and Other Comprehensive Income in the period in which they arise.

Loans and Receivables

Loans and receivables are non-derivative financial assets with fixed or determinable payments that are not quoted in an active market and are stated at amortised cost using the effective rate of interest method.

Financial Liabilities

Non-derivative financial liabilities are recognised at amortised cost using the effective rate of interest method, comprising original debt less principal payments and amortisation.

Investments

Shares in listed companies are measured on the cost basis. The carrying amount of investments is reviewed annually by Directors to ensure it is not in excess of the recoverable amount of these investments. The recoverable amount is assessed from the quoted market value for shares in listed companies or the underlying net assets for other non-listed corporations. The expected net cash flows from investments have not been discounted to their present value in determining the recoverable amounts.

(e) Foreign Currency Transactions and Balances

Foreign currency transactions during the period are converted to Australian dollars at the rates of exchange applicable at the date of the transaction. Amounts receivable and payable in foreign currencies at the reporting date are converted at the rates of exchange ruling at that date. It is the policy of the College not to hedge their foreign currency transactions.

The gains and losses from conversion of assets and liabilities, whether realised or unrealised, are included in the Statement of Profit or Loss and Other Comprehensive Income as they arise.

(f) Employee Benefits

Short-term employee benefits

Liabilities for wages and salaries, including non-monetary benefits expected to be settled wholly within 12 months after the end of the reporting period are recognised in other liabilities in respect of employees' services rendered up to the end of the reporting period and are measured at amounts expected to be paid when the liabilities are settled. Liabilities for non-accumulating sick leave are recognised when leave is taken and measured at the actual rates paid or payable.

Notes to the Financial Statements

NOTES TO THE FINANCIAL STATEMENTS FOR THE FINANCIAL YEAR ENDED 30 JUNE 2016

1. Significant Accounting Policies (continued)

(f) Employee Benefits (continued)

Other long-term employee benefits

Liabilities for long service leave and annual leave are not expected to be settled wholly within 12 months after the end of the reporting period. They are recognised as part of the provision for employee benefits and measured as the present value of expected future payments to be made in respect of services provided by employees to the end of the reporting period using the projected unit credit method. Consideration is given to expected future salaries and wages levels, experience of employee departures and periods of service. Expected future payments are discounted using national government bond rates at the end of the reporting period with terms to maturity and currency that match, as closely as possible, the estimated future cash outflows.

Regardless of when settlement is expected to occur, liabilities for long service leave and annual leave are presented as current liabilities in the statement of financial position if the entity does not have an unconditional right to defer settlement for at least 12 months after the end of the reporting period.

(g) Cash and Cash Equivalents

For the purpose of the Statement of Cash Flows, cash includes cash on hand and in call deposits with banks or financial institutions, investments in money market instruments maturing within less than three months, net of bank overdrafts.

(h) Comparative Figures

When required by Accounting Standards, comparative figures have been adjusted to conform to changes in presentation for the current financial year.

(i) Borrowing Costs

Borrowing costs are recognised in the Statement of Profit or Loss and Other Comprehensive Income in the period in which they are incurred, unless they are attributable to a qualifying asset when they are capitalised as part of the asset.

(j) Goods and Services Tax (GST)

Revenues, expenses and assets are recognised net of the amount of Goods and Services Tax (GST), except where the amount of GST incurred is not recoverable from the Australian Taxation Office (ATO). In these circumstances, the GST is recognised as part of the cost of acquisition of an asset or as part of the expense.

Receivables and payables in the Statement of Financial Position are shown inclusive of GST.

The net amount of GST recoverable from, or payable to, the ATO is included as a current asset or liability in the Statement of Financial Position.

Cash flows are included in Statement of Cash Flows on a gross basis. The GST component of cash flow arising from investing and financing activities which are recoverable from, or payable to, the ATO are classified as operating cash flows. The prior year comparatives on the Statement of Cash Flows have been restated to incorporate GST.

Notes to the Financial Statements

NOTES TO THE FINANCIAL STATEMENTS FOR THE FINANCIAL YEAR ENDED 30 JUNE 2016

1. Significant Accounting Policies (continued)

(k) Impairment of Assets

At each reporting date, the College reviews the carrying value of its tangible assets to determine whether there is any indication that those assets have been impaired. If such an indication exists, the recoverable amount of the assets, being the higher of the assets fair value less costs to sell and value in use, is compared to the assets carrying value. Any excess of the assets carrying value over its recoverable amount is expensed to the Statement of Profit or Loss and Other Comprehensive Income.

Where the future economic benefits of the asset are not primarily dependent upon the asset's ability to generate net cash inflows and when the College would, if deprived of the asset, replace its future economic benefits. Value in use is the depreciated replacement cost of an asset.

(l) Critical Accounting Estimates and Judgements

The Directors evaluate estimates and judgments incorporated into the financial report based on historical knowledge and best available current information. Estimates assume a reasonable expectation of future events and are based on current trends and economic data obtained externally. The key areas where the directors have exercised judgements are: recoverability of trade debtors and the estimated useful life of property, plant and equipment.

(m) Grants

The College receives grant monies to fund projects either for contracted periods of time or for specific projects irrespective of the period of time required to complete those projects. It is the policy of the College to treat grant monies as deferred grant income in the Statement of Financial Position where the entity is contractually obliged to provide the services in a subsequent financial period to when the grant is received or in the case of specific project grants where the project has not been completed.

(n) Revenue Recognition Policy

Significant revenue streams:

- Subscriptions and examination fees are recognised in the period to which they relate.
- Donations and registration fees are recognised in the period in which they are received.
- Grant revenue is recognised as and when the related costs to which they are intended to compensate are incurred.
- Interest income is recognised as it accrues, using the effective interest rate.

(o) New, Revised and Amended Standards and Interpretations

The College has adopted all of the new, revised or amending Accounting Standards and Interpretations issued by the Australian Accounting Standards Board ('AASB') that are mandatory for the current reporting period.

Any new, revised or amending Accounting Standards or Interpretations that are not yet mandatory have not been early adopted.

The adoption of these Accounting Standards and Interpretations did not have any significant impact on the financial performance or position of the college.

Notes to the Financial Statements

NOTES TO THE FINANCIAL STATEMENTS FOR THE FINANCIAL YEAR ENDED 30 JUNE 2016

1. Significant Accounting Policies (continued)

(p) New accounting standards and interpretations not yet mandatory or early adopted.

Australian Accounting Standards and Interpretations that have recently been issued or amended but are not yet mandatory, have not been early adopted by the company for the annual reporting period ended 30 June 2016. The company's assessment of the impact of these new or amended Accounting Standards and Interpretations, most relevant to the company, are set out below.

AASB 9 Financial Instruments

This standard is applicable to annual reporting periods beginning on or after 1 January 2018. The standard replaces all previous versions of AASB 9 and completes the project to replace IAS 39 'Financial Instruments: Recognition and Measurement'. AASB 9 introduces new classification and measurement models for financial assets. A financial asset shall be measured at amortised cost, if it is held within a business model whose objective is to hold assets in order to collect contractual cash flows, which arise on specified dates and solely principal and interest. All other financial instrument assets are to be classified and measured at fair value through profit or loss unless the entity makes an irrevocable election on initial recognition to present gains and losses on equity instruments (that are not held-for-trading) in other comprehensive income ('OCI'). For financial liabilities, the standard requires the portion of the change in fair value that relates to the entity's own credit risk to be presented in OCI (unless it would create an accounting mismatch). New simpler hedge accounting requirements are intended to more closely align the accounting treatment with the risk management activities of the entity. New impairment requirements will use an 'expected credit loss' ('ECL') model to recognise an allowance. Impairment will be measured under a 12-month ECL method unless the credit risk on a financial instrument has increased significantly since initial recognition in which case the lifetime ECL method is adopted. The standard introduces additional new disclosures. The company will adopt this standard from 1 July 2018 but the impact of its adoption is yet to be assessed by the company.

AASB 15 Revenue from Contracts with Customers

This standard is applicable to annual reporting periods beginning on or after 1 January 2017. The standard provides a single standard for revenue recognition. The core principle of the standard is that an entity will recognise revenue to depict the transfer of promised goods or services to customers in an amount that reflects the consideration to which the entity expects to be entitled in exchange for those goods or services. The standard will require: contracts (either written, verbal or implied) to be identified, together with the separate performance obligations within the contract; determine the transaction price, adjusted for the time value of money excluding credit risk; allocation of the transaction price to the separate performance obligations on a basis of relative stand-alone selling price of each distinct good or service, or estimation approach if no distinct observable prices exist; and recognition of revenue when each performance obligation is satisfied. Credit risk will be presented separately as an expense rather than adjusted to revenue. For goods, the performance obligation would be satisfied when the customer obtains control of the goods. For services, the performance obligation is satisfied when the service has been provided, typically for promises to transfer services to customers. For performance obligations satisfied over time, an entity would select an appropriate measure of progress to determine how much revenue should be recognised as the performance obligation is satisfied. Contracts with customers will be presented in an entity's statement of financial position as a contract liability, a contract asset, or a receivable, depending on the relationship between the entity's performance and the customer's payment. Sufficient quantitative and qualitative disclosure is required to enable users to understand the contracts with customers; the significant judgments made in applying the guidance to those contracts; and any assets recognised from the costs to obtain or fulfil a contract with a customer. The company will adopt this standard from 1 July 2017 but the impact of its adoption is yet to be assessed by the company.



Notes to the Financial Statements

1. Significant Accounting Policies (continued)

(p) New accounting standards and interpretations not yet mandatory or early adopted (continued).

AASB 16 Leases

This standard is applicable to annual reporting periods beginning on or after 1 January 2019. To the extent that the entity, as lessee, has significant operating leases outstanding at the date of initial application, right-of-use assets will be recognised for the amount of the unamortised portion of the useful life, and lease liabilities will be recognised at the present value of the outstanding lease payments. Thereafter, earnings before interest, depreciation, amortisation and tax ('EBITDA') will increase because operating lease expenses currently included in EBITDA will be recognised instead as amortisation of the right-of-use asset, and interest expense on the lease liability. However, there will be an overall reduction in net profit before tax in the early years of a lease because the amortisation and interest charges will exceed the current straight-line expense incurred under AASB 117 Leases. This trend will reverse in the later years. There will be no change to the accounting treatment for short-term leases less than 12 months and leases of low value items, which will continue to be expensed on a straight-line basis.

2. Entity Limited by Guarantee

The College is limited by guarantee under the *Corporations Act 2001*. The amount of capital, which is capable of being called up, in the event of, and only for the purpose of a winding up of the College, is not to exceed \$20 per member by virtue of the College's Constitution.

Notes to the Financial Statements

NOTES TO THE FINANCIAL STATEMENTS FOR THE FINANCIAL YEAR ENDED 30 JUNE 2016

	Note	2016 \$	2015 \$
3. Subscription and training revenue			
Subscriptions		3,817,753	3,606,358
Registration fees		707,215	668,769
Examination fees		1,048,900	972,886
Pathology update conference		984,904	1,055,060
		<u>6,588,772</u>	<u>6,303,073</u>
4. Other revenue			
Earnings from cash holdings and managed funds			
- Dividends received		89,007	110,882
- Interest received		191,765	166,942
Dividends received from RCPA Quality Assurance Programs Pty Ltd		285,714	-
Donations received – Education & Research Fund	15	5,395	100,000
Donations received – RCPA Foundation		140,181	246,752
Royalties from pathology journal		268,015	155,125
Editorial support for pathology journal		29,165	42,466
Revenue from other activities		86,129	94,826
		<u>1,095,371</u>	<u>916,993</u>
5. Profit			
(a) Expenses			
Depreciation of non-current owned assets		167,996	140,650
Depreciation of non-current leased assets		17,516	20,854
		<u>185,512</u>	<u>161,504</u>
Impairment of trade receivables		-	33,501
Bad debts written off		-	28,999
Finance and investment costs:			
Merchant charges for credit card facility		88,367	85,659
Investment charges		46,021	49,339
Bank fees and charges		4,644	8,467
Lease finance charges		1,276	4,015
		<u>140,308</u>	<u>147,480</u>

Notes to the Financial Statements

NOTES TO THE FINANCIAL STATEMENTS FOR THE FINANCIAL YEAR ENDED 30 JUNE 2016

	2016 \$	2015 \$
5. Profit (continued)		
(b) Significant Revenues and Expenses		
The following revenue and expenses are relevant in explaining the financial performance of the College:		
Included in revenue and other expenses per the Statement of Profit or Loss and Other Comprehensive Income are the following revenues and expenses resulting from specific grants received by the College. Grant revenue is recognised as expenses are incurred, any excess of Grant receipts over Grant expenses is recognised in the Statement of Financial Position as Deferred Grant Income. Unexpended Grant income is returned to the Grant provider.		
Grant - Standardisation of Pathology Information Terminology and Units Part 1 and 2		
Revenues	338,725	255,960
Expenses	338,725	255,960
Deferred Grant Income	635,900	500,000
Grant – Pathology Workforce Change - National Cervical Screening Program		
Revenues	117,303	-
Expenses	117,303	-
Deferred Grant Income	232,697	-
Grant – Medical Services Advisory Committee		
Revenues	25,000	-
Expenses	25,000	-
Deferred Grant income	(15,910)	-
Grant - Electronic Decision Support - Pathology Requesting		
Revenues	-	256,802
Expenses	-	256,802
Deferred Grant Income	23,915	51,878
Grant - Common Sense Pathology		
Revenues	97,909	18,182
Expenses	97,909	18,182
Deferred Grant Income	-	74,691
Grant – Structured Reporting of Cancer funding for an additional protocol		
Revenues	-	-
Expenses	-	-
Deferred Grant income	82,331	-
Other Grants		
Revenues	-	9,604
Expenses	-	9,604
Deferred Grant Income	19,742	19,742

Notes to the Financial Statements

NOTES TO THE FINANCIAL STATEMENTS FOR THE FINANCIAL YEAR ENDED 30 JUNE 2016

	2016 \$	2015 \$
5. Profit (continued)		
(b) Significant Revenues and Expenses (continued)		
Grant - Standards for Accreditation of DNA Sequence Variation Data Bases		
Revenues	-	158,205
Expenses	-	158,205
Deferred Grant Income	-	-
Grant - CPMC Update in Paediatric Aspects of Pathology		
Revenue	-	51,149
Expenses	-	51,149
Deferred Grant Revenue	-	-
Grant - Transformation of RCPA Manual		
Revenue	-	42,535
Expenses	-	42,535
Deferred Grant Income	-	23,329
Grant - QA in Morphological & Interpretative Pathology Disciplines Part 1 and 2		
Revenue	80,202	99,912
Expenses	80,202	99,912
Deferred Grant Income	-	80,202
Grant - Structural Pathology Reporting of Cancer		
Revenues	228,553	173,106
Expenses	228,553	173,106
Deferred Grant Income	30,560	150,156
Grant – Specialist Training Program - Tasmania		
Revenue	794,151	287,302
Expenses	794,151	287,302
Deferred Grant Income	875,641	953,598
Grant - Specialist Training Program		
Revenues	10,993,953	11,164,249
Expenses	10,993,953	11,164,249
Deferred Grant Income	1,886,822	2,638,662
Total Grant Revenues	12,675,796	12,517,006
Total Grant Expenses	12,675,796	12,517,006
Total Deferred Grant Income	3,771,698	4,492,258

Notes to the Financial Statements

NOTES TO THE FINANCIAL STATEMENTS FOR THE FINANCIAL YEAR ENDED 30 JUNE 2016

	2016 \$	2015 \$
6. Cash and Cash Equivalents		
Cash at bank	6,535,031	7,451,865
Cash on hand	500	500
	<u>6,535,531</u>	<u>7,452,365</u>
7. Trade and Other Receivables		
Current		
Trade receivables	3,410,209	2,830,122
Less: provision for impairment	(277,909)	(277,909)
	<u>3,132,300</u>	<u>2,552,213</u>
-Amounts receivable from related parties (Note 21)	40,862	19,997
	<u>3,173,162</u>	<u>2,553,774</u>
8. Other Current Assets		
Prepayments	200,973	124,108
Cash held on behalf of State Committees	140,045	137,686
	<u>341,018</u>	<u>261,794</u>
The Cash held on behalf of State Committees, its ultimate ownership rests with the College. State Committees have discretion over the use of this cash.		
9. Financial Assets		
Current		
Managed Investments at fair value through profit or loss		
- Cash Management	3,155,470	3,048,466
- Fixed Interest – securities	2,572,878	2,552,584
- Equities (shares and similar investments)	1,417,586	1,463,815
	<u>7,145,934</u>	<u>7,064,865</u>
Non-Current		
Shares in listed corporations		
- At cost	7,107	7,107
	<u>7,107</u>	<u>7,107</u>
10. Investments in subsidiary company		
RCPA Quality Assurance Programs Pty Ltd - 2 Ordinary shares fully paid	2	-
	<u>2</u>	<u>-</u>

Notes to the Financial Statements

NOTES TO THE FINANCIAL STATEMENTS FOR THE FINANCIAL YEAR ENDED 30 JUNE 2016

	2016 \$	2015 \$
11. Property, Plant and Equipment		
Property		
Land and building improvements	178,898	178,898
Less: accumulated depreciation	(45,658)	(27,731)
Land and buildings – at cost [refer note 1 (b)]	3,814,492	3,814,492
Less: impairment	(148,185)	(148,185)
Total property	<u>3,799,547</u>	<u>3,817,474</u>
Plant and Equipment – General Fund		
Office furniture – at cost	208,074	195,601
Less: accumulated depreciation	(135,992)	(116,900)
	<u>72,082</u>	<u>78,701</u>
Office equipment and machines – at cost	389,321	384,434
Less: accumulated depreciation	(352,740)	(343,240)
	<u>36,581</u>	<u>41,194</u>
Wall hangings – at cost	4,135	4,135
Maori carved panel – at cost	4,750	4,750
	<u>8,885</u>	<u>8,885</u>
Computer equipment – at cost	1,842,999	1,824,835
Less: accumulated depreciation	(1,640,975)	(1,521,058)
	<u>202,024</u>	<u>303,777</u>
Leased assets – at cost	93,558	104,382
Less accumulated amortisation	(14,031)	(82,100)
	<u>79,527</u>	<u>22,282</u>
Honour boards – at cost	<u>6,682</u>	<u>6,682</u>
Plant and Equipment – Education and research Fund		
Portraits – at cost	2,565	2,565
Historical books – at cost	4,595	4,595
Cedar table – at cost	4,700	4,700
Medals – at cost	1,575	1,575
	<u>13,435</u>	<u>13,435</u>
Total Plant and Equipment	<u>419,216</u>	<u>474,956</u>
Work in progress	<u>-</u>	<u>-</u>
Total Property, Plant and Equipment	<u>4,218,763</u>	<u>4,292,430</u>

Notes to the Financial Statements

NOTES TO THE FINANCIAL STATEMENTS FOR THE FINANCIAL YEAR ENDED 30 JUNE 2016

11. Property, Plant and Equipment (continued)

(a) Movement in carrying amounts

Movement in the carrying amounts for each class of property, plant and equipment between the beginning and end of the current year are as follows:

	Land and Buildings	Computer Equipment & Software	Plant, Equipment & Furniture	Work in progress Building	Work in progress Computer Equipment & Software	Leased Assets	Total
	\$	\$	\$	\$	\$	\$	\$
Balance at beginning of year	3,817,474	303,777	148,898	-	-	22,281	4,292,430
Additions	-	18,165	18,919	-	-	93,558	130,642
Disposals	-	-	(1,197)	-	-	(17,600)	(18,797)
Depreciation expense	(17,927)	(119,918)	(28,955)	-	-	(18,712)	(185,512)
Carrying amount at the end of year	3,799,547	202,024	137,665	-	-	79,527	4,218,763

(b) Fair value of land and buildings

The Directors obtained professional advice from an insurance valuer to ascertain the insurance replacement value of the freehold property owned by the College at 203-205 Albion Street, Surry Hills. The advice received was dated May 2015. Based on the valuation provided, the property has a current replacement value of \$2.918 million. This valuation takes into account the age and condition of the property, recent comparable sales and the fact that the property is heritage listed. In addition, the Directors obtained a market valuation for the property from a licensed independent valuer. Their report is dated 20 April 2015 and the market value of the property was found to be \$2.8 million. In the Directors opinion, the independent valuation best reflects current market conditions and the recoverable amount of the property leading to an impairment charge of \$148,185 being recorded during the year.

The Directors considered the valuation of the property owned by the College at 207 Albion Street, Surry Hills and obtained professional advice from an insurance valuer to ascertain the insurance replacement value. The advice received was a formal valuation and was dated May 2013. Based on the valuation provided, the property has a current replacement value of \$2.78 million. This valuation takes into account the age and condition of the property, recent comparable sales and the fact that it is heritage listed. The above value does not include costs of realisation, estimated to be in the range of 3% to 4%. In the Directors opinion, this valuation and current market conditions continue to support that the cost of the property is not in excess of its recoverable amount.

Notes to the Financial Statements

NOTES TO THE FINANCIAL STATEMENTS FOR THE FINANCIAL YEAR ENDED 30 JUNE 2016

	2016 \$	2015 \$
12. Trade and Other Payables		
Current (unsecured)		
Trade creditors	69,257	88,512
Accruals	303,602	350,087
Other current payables	232,016	271,632
Total trade and other payables	604,875	710,231
Other Current Liabilities (unsecured)		
Grant income deferred	3,771,698	4,492,258
Revenue received in advance	5,466,802	5,341,693
Total other liabilities	9,238,500	9,833,951
13. Borrowings		
Current (secured)		
Lease liability (Note 14)	6,237	24,836
Non Current (secured)		
Lease liability (Note 14)	70,169	-
Total current and non current secured liabilities	76,406	24,836
14. Provisions		
Current		
Employee benefits:		
Opening balance	557,454	453,874
Movements during the year	128,700	103,580
Closing balance	686,154	557,454
Non Current		
Employee benefits:		
Opening balance	149,396	67,126
Movements during the year	6,693	82,270
Closing balance	156,089	149,396
 Aggregate employee benefit liability	 842,243	 706,850

Provision for Non Current Employee Benefits

A provision has been recognised for employee entitlements relating to long service leave. In calculating the present value of future cash flows in respect of long service leave, the probability of long service leave taken is based on historical data. The measurement and recognition criteria relating to employee benefits have been included in Note 1 of this financial report.

Notes to the Financial Statements

NOTES TO THE FINANCIAL STATEMENTS FOR THE FINANCIAL YEAR ENDED 30 JUNE 2016

	2016 \$	2015 \$
15. Capital and Lease Commitments		
(a) Finance Lease Commitments Payable:		
- Not later than one year	6,237	25,885
- Later than one year but not later than five years	70,168	-
Minimum lease payments	76,405	25,885
Less future finance charges	-	(1,049)
Total lease liability	76,405	24,836
The finance lease on office plant and equipment, which commenced in September 2015, is a 5-year lease. The lease payments are paid monthly in advance. The security for this lease is the asset being leased under this arrangement.		
(b) Operating Lease Commitments Payable:		
The College has operating lease commitments payable as at 30 June 2016 of \$3,456 (2015: \$3,456).		
- No later than one year	3,456	3,456
- Later than two years but no later than five years	-	-
Total operating lease commitments	3,456	3,456
(c) Capital Expenditure		
The College has no commitments for capital expenditure at the date of this report		
16. RCPA Foundation for Education and Research		
Opening balance	1,382,183	1,333,979
Donations received	140,181	246,752
Investment income	27,880	43,780
Grants awarded	(118,500)	(79,970)
Contribution to the Alan Ng Education Centre	(65,814)	(148,185)
Expenses	(10,731)	(14,173)
Total (loss)/income for the year	(26,984)	48,204
Closing balance	1,355,199	1,382,183
Represented by:		
Cash at bank	119,918	160,077
Managed investments – Cash management	1,235,281	1,222,106
Total fund	1,355,199	1,382,183

Notes to the Financial Statements

NOTES TO THE FINANCIAL STATEMENTS FOR THE FINANCIAL YEAR ENDED 30 JUNE 2016

16. RCPA Foundation for Education and Research (continued)

The RCPA Foundation for Education and Research was established as a College fund in 2012. The fund was created from donations received specifically to support grants and other forms of assistance for Pathologists and Scientists undertaking further education and relevant research.

The College Board of Directors has formed an independent committee to administer the RCPA Foundation for Education and Research.

17. Remuneration of Directors

The Directors of the College received no remuneration or benefits during the financial year (2015: nil).

Directors have been in office since the start of the financial year to the date of this report unless otherwise stated.

Dr Roger Wilson
Dr Michael Dray
Dr Sophia Otto
Dr Lawrence Bott
Dr Bruce Latham

Prof Anthony Landgren
Dr Michael Harrison
Dr Merrole Cole-Sinclair
Dr Janet Kencian

18. Key Management Personnel Remuneration

The total compensation of key management personnel is as follows:

	2016 \$	2015 \$
Aggregate compensation	681,964	664,702

Notes to the Financial Statements

NOTES TO THE FINANCIAL STATEMENTS FOR THE FINANCIAL YEAR ENDED 30 JUNE 2016

19. Contingent Liabilities

The Directors of the College are not aware of any contingent liabilities as at 30 June 2016 (2015 Nil).

20. Events Subsequent to Reporting Date

No matters or circumstance has arisen since 30 June 2016 that has significantly affected, or may significantly affect the College's operations, the results of those operations, or the College's state of affairs in future financial years.

21. Related Party Transactions

	2016 \$	2015 \$
During the year the College entered into the following transactions with the following entities.		
Administration charge contribution from QAP	109,555	106,783
Cost recovery from ICCR	88,235	-
Other transactions not on normal commercial terms:		
Discretionary donations received from QAP	-	100,000
Dividend received from QAP	200,000	
Amount owed by QAP at balance date	2,913	1,561
Amount owed by ICCR at balance date	37,950	-

Term of payment for QAP and ICCR is 30 days from the date of invoice.

QAP, full name RCPA Quality Assurance Programs Pty Limited, was established under a Trust Deed set up by the Council of the College. The members of the QAP Board of Directors are Fellows of the College. From 1 July 2015 QAP became a subsidiary company wholly owned by the College.

ICCR, full name International Collaboration for Cancer Reporting Limited, was established as a company limited by guarantee in 2014. The College is a founding member of ICCR and has permanent representation on the board of directors.

Notes to the Financial Statements

NOTES TO THE FINANCIAL STATEMENTS FOR THE FINANCIAL YEAR ENDED 30 JUNE 2016

	2016 \$	2015 \$
22. Cash Flow Information		
(a) Reconciliations of Cash		
Cash at bank	6,535,031	7,451,865
Cash on hand	500	500
	<u>6,535,531</u>	<u>7,452,365</u>
(b) Reconciliation of Profit after Income Tax to Net Cash from Operating Activities		
Profit after income tax	303,025	413,865
Non-cash flows in profit		
Depreciation	184,315	161,504
Bad debts	-	48,056
Provision for doubtful debts	-	33,501
Impairment of assets	-	148,185
Fair value loss (gain) on financial assets through to profit or loss	135,077	30,294
Changes in assets and liabilities		
(Increase)/decrease in receivables	(619,387)	187,409
(Increase)/decrease in prepayments	(76,865)	122,756
Increase in other assets	(2,359)	(4,231)
(Decrease)/increase in creditors and accruals	(105,358)	(1,047,331)
Increase in provisions	135,393	68,241
(Decrease)/increase in other liabilities	(595,451)	1,454,990
Cash flows from operating activities	<u>(641,610)</u>	<u>1,617,239</u>



INDEPENDENT AUDITOR'S REPORT

INDEPENDENT AUDITOR'S REPORT

To the members of The Royal College of Pathologists of Australasia,

Report on the Financial Report

We have audited the accompanying financial report, being a special purpose financial report of The Royal College of Pathologists of Australasia, which comprises the statement of financial position as at 30 June 2016, the statement of profit or loss and other comprehensive income, statement of changes in equity and statement of cash flows for the year then ended, notes comprising a summary of significant accounting policies and other explanatory information, and the directors' declaration.

Directors' Responsibility for the Financial Report

The directors of the company are responsible for the preparation and fair presentation of the financial report, and have determined that the basis of preparation described in Note 1 to the financial report is appropriate to meet the financial reporting requirements of the constitution and is appropriate to meet the needs of the members. The directors' responsibility also includes such internal control as the directors determine is necessary to enable the preparation and fair presentation of a financial report that is free from material misstatement, whether due to fraud or error.

Auditor's Responsibility

Our responsibility is to express an opinion on the financial report based on our audit. We have conducted our audit in accordance with Australian Auditing Standards. Those standards require that we comply with relevant ethical requirements relating to audit engagements and plan and perform the audit to obtain reasonable assurance whether the financial report is free from material misstatement.

An audit involves performing procedures to obtain audit evidence about the amounts and disclosures in the financial report. The procedures selected depend on the auditor's judgement, including the assessment of the risks of material misstatement of the financial report, whether due to fraud or error. In making those risk assessments, the auditor considers internal control relevant to the company's preparation and fair presentation of the financial report in order to design audit procedures that are appropriate in the circumstances, but not for the purpose of expressing an opinion on the effectiveness of the company's internal control. An audit also includes evaluating the appropriateness of accounting policies used and the reasonableness of accounting estimates made by the directors, as well as evaluating the overall presentation of the financial report.

We believe that the audit evidence we have obtained is sufficient and appropriate to provide a basis for our audit opinion.

Independence

In conducting our audit, we have complied with the independence requirements of the Australian professional accounting bodies.

BDO East Coast Partnership ABN 83 236 985 726 is a member of a national association of independent entities which are all members of BDO Australia Ltd ABN 77 050 110 275, an Australian company limited by guarantee. BDO East Coast Partnership and BDO Australia Ltd are members of BDO International Ltd, a UK company limited by guarantee, and form part of the international BDO network of independent member firms. Liability limited by a scheme approved under Professional Standards Legislation, other than for the acts or omissions of financial services licensees.

Independent Auditor's Report

Opinion

In our opinion the financial report presents fairly, in all material respects, the financial position of The Royal College of Pathologists of Australasia as at 30 June 2016, and its financial performance and its cash flows for the year then ended in accordance with Australian Accounting Standards to the extent described in Note 1.

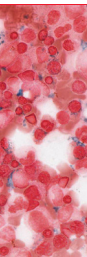
Basis of Accounting

Without modifying our opinion, we draw attention to Note 1 to the financial report, which describes the basis of accounting. The financial report has been prepared for the purpose of fulfilling the directors' financial reporting responsibilities under the constitution. As a result, the financial report may not be suitable for another purpose.

BDO East Cost Partnership


John Bresolin
Partner

Sydney, 28 September 2016



THIS PAGE LEFT BLANK INTENTIONALLY

ABN 52 000 173 231

Durham Hall

207 Albion Street

Surry Hills NSW 2010

Australia

Telephone 61 2 8356 5858

Facsimile 61 2 8356 5828

Email rcpa@rcpa.edu.au

Website www.rcpa.edu.au

Medicine is Pathology 